

SCREW CONVEYOR MODEL "SC"

BULLMECH "SC" screw conveyor are designed according to the specific needs of the customer. Each machine is sized according to the material to be conveyed and designed according to the planned plant layout.

The special construction of the head, with provide emergency supports with specific dust and loop seals, allow the machines to be installed even in dusty and potentially explosive areas as required by the ATEX regulations.

The quality of the components used and the careful design allow BULLMECH screw to work in continuous cycle systems ensuring maximum reliability and minimum operating costs.

The BULLMECH screw can be made of carbon steel, HARDOX wear-resistant steel or AISI 304 and / or AISI 316 stainless steel depending on the material to be transported.

Benefits:

- Excellent material transport without jamming
- Very low maintenance costs
- Design dedicated to customer specifications



CODE DEFINITION

TYPE	/	Spiral Diameter	/	SINGLE Spiral shaft	-	Case internal length	-	Equipment compatible with 2014/34/EU ATEX [a]
S C	/	3 0 0	/	S	-	5 0 0 0	-	A T 2 2

[a]: AT22 = Area classified ATEX zone 22
 = Unclassified area (Omit)

TYPE "S"	Spiral Diameter	Case internal length		Capacity [c]		Installed power [c]	
	[mm]	[mm]		[m³/h]		[kW]	
		Min	Max	Min	Max	Min	Max
SC/150/S/.....	150	1.000	3.500	0,5	3,5	0,55	2,2
SC/200/S/....	200	1.000	4.500	2	8	0,55	2,2
SC/250/S/....	250	1.000	5.000	4	15	0,55	3,0
SC/300/S/....	300	1.000	6.000	7	25	0,55	4,0
SC/350/S/....	350	1.000	6.000	10	40	0,55	5,5
SC/400/S/....	400	1.000	8.000	15	70	0,55	11,0
SC/450/S/....	450	1.000	8.000	25	100	0,75	11,0
SC/500/S/....	500	1.000	8.000	35	130	1,1	15,0
SC/550/S/....	550	2.000	9.000	45	130	1,5	15,0
SC/600/S/....	600	2.000	10.000	60	220	1,5	22,0
SC/650/S/....	650	3.000	10.000	80	250	3,0	30,0
SC/700/S/....	700	3.000	12.000	100	290	4,0	37,0
SC/750/S/....	750	3.000	12.000	120	320	5,5	37,0
SC/800/S/....	800	3.000	12.000	150	320	5,5	45,0
SC/900/S/....	900	3.000	12.000	150	460	7,5	55,0
SC/1000/S/....	1.000	5.000	12.000	250	560	18,5	75,0
SC/1200/S/....	1.200	5.000	12.000	350	760	22,0	110,0

[c]: Calculation carried out with material density 180 kg/m³ and humidity 100%

The capacity and power data are indicative but allow you to quickly identify the machine size closest to the transport needs. The exact calculations of flow rate and power will be made in the offer phase according to the required application.

Example for order: **SC/300/S-5000-AT22**

CODE DEFINITION

TYPE	/	Spiral Diameter	/	DOUBLE Spiral shaft	-	Case internal length	-	Equipment compatible with 2014/34/EU ATEX [a]
S C	/	3 0 0	/	D	-	5 0 0 0	-	A T 2 2

[a]: AT22 = Area classified ATEX zone 22
 = Unclassified area (Omit)

TYPE "D"	Spiral Diameter	Case internal length		Capacity [c]		Installed power [c]	
		[mm]	[mm]	[m ³ /h]	[kW]		
		Min	Max	Min	Max	Min	Max
SC/150/D/....	150	1.000	3.500	1	7	2x0,55	2x2,2
SC/200/D/....	200	1.000	4.500	4	8	2x0,55	2x2,2
SC/250/D/....	250	1.000	5.000	8	30	2x0,55	2x3,0
SC/300/D/....	300	1.000	6.000	14	50	2x0,55	2x4,0
SC/350/D/....	350	1.000	6.000	20	80	2x0,55	2x5,5
SC/400/D/....	400	1.000	8.000	30	140	2x0,55	2x11,0
SC/450/D/....	450	1.000	8.000	50	200	2x0,75	2x11,0
SC/500/D/....	500	1.000	8.000	70	260	2x1,1	2x15,0
SC/550/D/....	550	2.000	9.000	90	260	2x1,5	2x15,0
SC/600/D/....	600	2.000	10.000	120	440	2x1,5	2x22,0
SC/650/D/....	650	3.000	10.000	160	500	2x3,0	2x30,0
SC/700/D/....	700	3.000	12.000	200	580	2x4,0	2x37,0
SC/750/D/....	750	3.000	12.000	240	640	2x5,5	2x37,0
SC/800/D/....	800	3.000	12.000	300	640	2x5,5	2x45,0
SC/900/D/....	900	3.000	12.000	300	920	2x7,5	2x55,0
SC/1000/D/....	1.000	5.000	12.000	500	1.120	2x18,5	2x75,0
SC/1200/D/....	1.200	5.000	12.000	700	1.520	2x22,0	2x110,0

[c]: Calculation carried out with material density 180 kg/m³ and humidity 100%

The capacity and power data are indicative but allow you to quickly identify the machine size closest to the transport needs. The exact calculations of flow rate and power will be made in the offer phase according to the required application.

Example for order: **SC/300/D-5000-AT22**

CODE DEFINITION



[a]: AT22 = Area classified ATEX zone 22
 = Unclassified area (Omit)

TYPE "T"	Spiral Diameter	Case internal length		Capacity [c]		Installed power [c]	
	[mm]	[mm]		[m ³ /h]		[kW]	
		Min	Max	Min	Max	Min	Max
SC/150/T/....	150	1.000	3.500	1	7	3x0,55	3x2,2
SC/200/T/....	200	1.000	4.500	4	8	3x0,55	3x2,2
SC/250/T/....	250	1.000	5.000	8	30	3x0,55	3x3,0
SC/300/T/....	300	1.000	6.000	14	50	3x0,55	3x4,0
SC/350/T/....	350	1.000	6.000	20	80	3x0,55	3x5,5
SC/400/T/....	400	1.000	8.000	30	140	3x0,55	3x11,0
SC/450/T/....	450	1.000	8.000	50	200	3x0,75	3x11,0
SC/500/T/....	500	1.000	8.000	70	260	3x1,1	3x15,0
SC/550/T/....	550	2.000	9.000	90	260	3x1,5	3x15,0
SC/600/T/....	600	2.000	10.000	120	440	3x1,5	3x22,0
SC/650/T/....	650	3.000	10.000	160	500	3x3,0	3x30,0
SC/700/T/....	700	3.000	12.000	200	580	3x4,0	3x37,0
SC/750/T/....	750	3.000	12.000	240	640	3x5,5	3x37,0
SC/800/T/....	800	3.000	12.000	300	640	3x5,5	3x45,0
SC/900/T/....	900	3.000	12.000	300	920	3x7,5	3x55,0
SC/1000/T/....	1.000	5.000	12.000	500	1.120	3x18,5	3x75,0
SC/1200/T/....	1.200	5.000	12.000	700	1.520	3x22,0	3x110,0

[c]: Calculation carried out with material density 180 kg/m³ and humidity 100%

The capacity and power data are indicative but allow you to quickly identify the machine size closest to the transport needs. The exact calculations of flow rate and power will be made in the offer phase according to the required application.

Example for order: **SC/300/T-5000-AT22**

CODE DEFINITION

TYPE	/	Spiral Diameter	/	QUADRUPLE Spiral shaft	-	Case internal length	-	Equipment compatible with 2014/34/EU ATEX [a]
S C	/	3 0 0	/	Q	-	5 0 0 0	-	A T 2 2

[a]: AT22 = Area classified ATEX zone 22
 = Unclassified area (Omit)

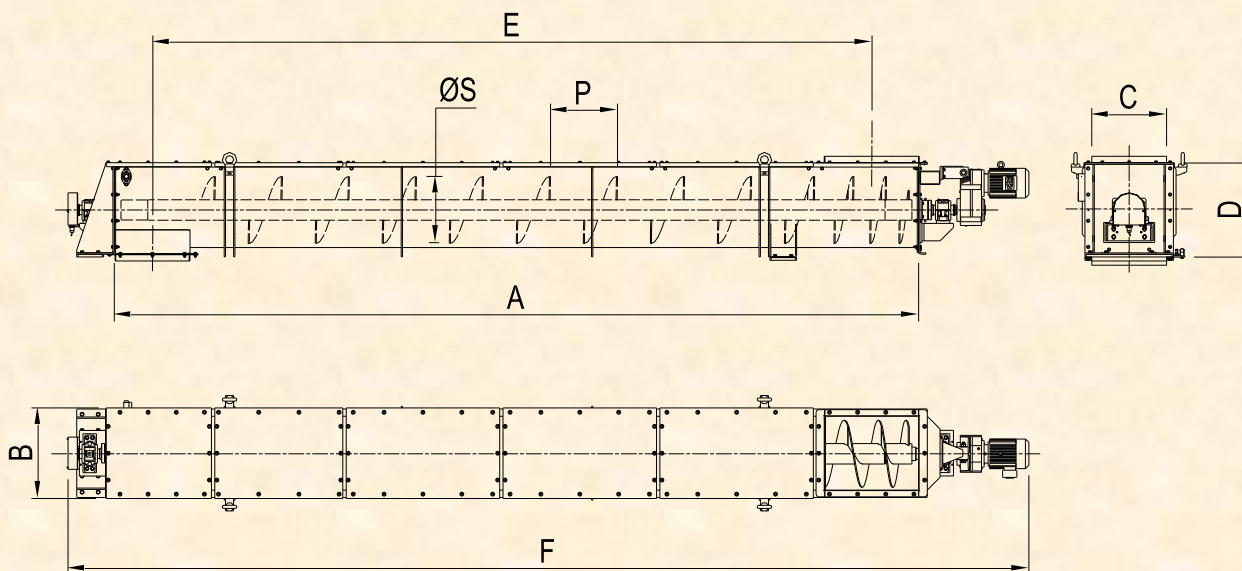
TYPE "Q"	Spiral Diameter	Case internal length		Capacity [c]		Installed power [c]	
	[mm]	[mm]		[m ³ /h]		[kW]	
		Min	Max	Min	Max	Min	Max
SC/150/Q/....	150	1.000	3.500	1	7	4x0,55	4x2,2
SC/200/Q/....	200	1.000	4.500	4	8	4x0,55	4x2,2
SC/250/Q/....	250	1.000	5.000	8	30	4x0,55	4x3,0
SC/300/Q/....	300	1.000	6.000	14	50	4x0,55	4x4,0
SC/350/Q/....	350	1.000	6.000	20	80	4x0,55	4x5,5
SC/400/Q/....	400	1.000	8.000	30	140	4x0,55	4x11,0
SC/450/Q/....	450	1.000	8.000	50	200	4x0,75	4x11,0
SC/500/Q/....	500	1.000	8.000	70	260	4x1,1	4x15,0
SC/550/Q/....	550	2.000	9.000	90	260	4x1,5	4x15,0
SC/600/Q/....	600	2.000	10.000	120	440	4x1,5	4x22,0
SC/650/Q/....	650	3.000	10.000	160	500	4x3,0	4x30,0
SC/700/Q/....	700	3.000	12.000	200	580	4x4,0	4x37,0
SC/750/Q/....	750	3.000	12.000	240	640	4x5,5	4x37,0
SC/800/Q/....	800	3.000	12.000	300	640	4x5,5	4x45,0

[c]: Calculation carried out with material density 180 kg/m³ and humidity 100%

The capacity and power data are indicative but allow you to quickly identify the machine size closest to the transport needs. The exact calculations of flow rate and power will be made in the offer phase according to the required application.

Example for order: **SC/300/Q-5000-AT22**

SCREW CONVEYOR MODEL "SC" - DATA SHEET -



TYPE (All)	OVERALL DIMENSIONS [mm]							
	Ø S	A	B	C	D	E	F	P
SC/150/....	150							
SC/200/....	200							
SC/250/....	250							
SC/300/....	300							
SC/350/....	350							
SC/400/....	400							
SC/450/....	450							
SC/500/....	500							
SC/550/....	550							
SC/600/....	600							
SC/650/....	650							
SC/700/....	700							
SC/750/....	750							
SC/800/....	800							
SC/900/....	900							
SC/1000/....	1.000							
SC/1200/....	1.200							

DIMENSIONS ACCORDING TO THE SYSTEM LAYOUT